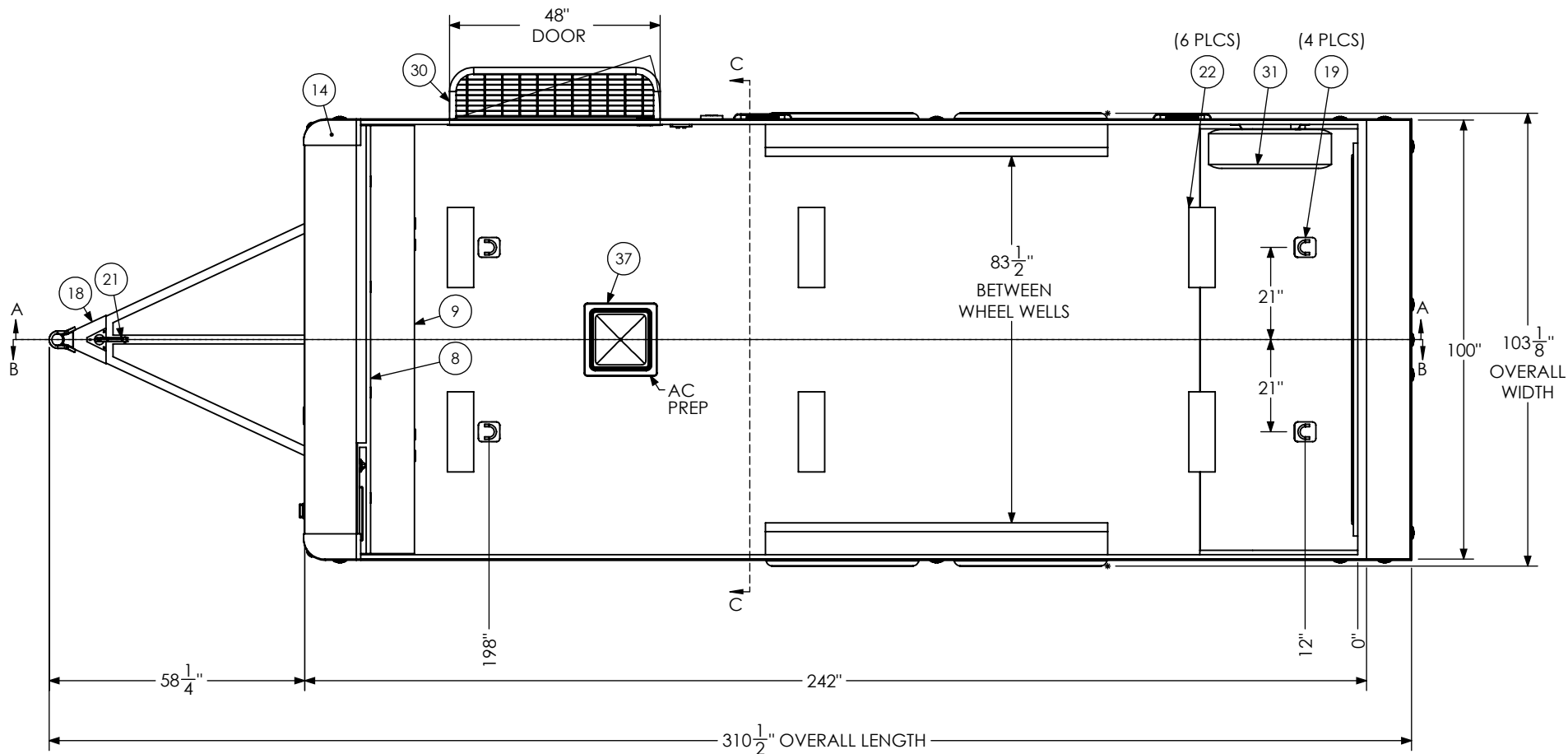


ITEM NO.	DESCRIPTION	NOTES	QTY.
1	Axle, Dexter	3500#, 0, 94HF, 78AB	2
8	BTL Cabinet, Overhead		1
9	BTL Cabinet, Straight Base		1
10	Bar Lock -		2
11	Battery Box		1
12	Battery Vent		1
13	Bumpers	1"	1
14	Cast Corners		1
15	Caster Wheel		2
18	Coupler	2 5/16" Ball, 14,000#	1
19	D-Ring	5,000	4
20	Door, Entrance	48" x 78" RHS	1
21	Jack - Top Wind		1
22	Light	18" 12v LED	6
23	Load Center	30 Amp L/C - 60 Amp Conv	1
24	Loading Light - LED	13.7" 12V Loading Light	2
25	Motorbase Plug	30 Amp	1
26	Outlet	120V 20 Amp	4
27	Ramp Extension	16" Transition Flap	1
30	Slide Out Step	48" Wide	1
31	Spare Tire Assembly		1
32	Spring Assist		1
33	Switch	12v Cutoff	1
34	Switch	2 - 12V Switches	1
36	Tire	ST205/75R15	4
37	Vent, Roof		1

PROPRIETARY AND CONFIDENTIAL
 THE INFORMATION CONTAINED IN THIS DRAWING IS THE
 SOLE PROPERTY OF INTECH TRAILERS. ANY REPRODUCTION
 IN PART OR AS A WHOLE WITHOUT THE WRITTEN PERMISSION
 OF INTECH TRAILERS IS PROHIBITED.

SCALE: 1:48	NAME	DATE	<i>inTech Trailers</i>	
DRAWN	NjM	1/3/22	inTech BTL8.5x20TA2 - STANDARD BOM	
ALL DIMENSIONS ARE IN INCHES AND ARE NOMINAL. DIMENSIONS ON ACTUAL TRAILER MAY VARY FROM WHAT IS SHOWN ON PRINT BASED ON ACTUAL FRAMING AND TRAILER STRUCTURE. UNLESS NOTED AS CRITICAL			DWG. NO. BTL8.5x20TA2 Trailer Assembly - Standard	REV. H

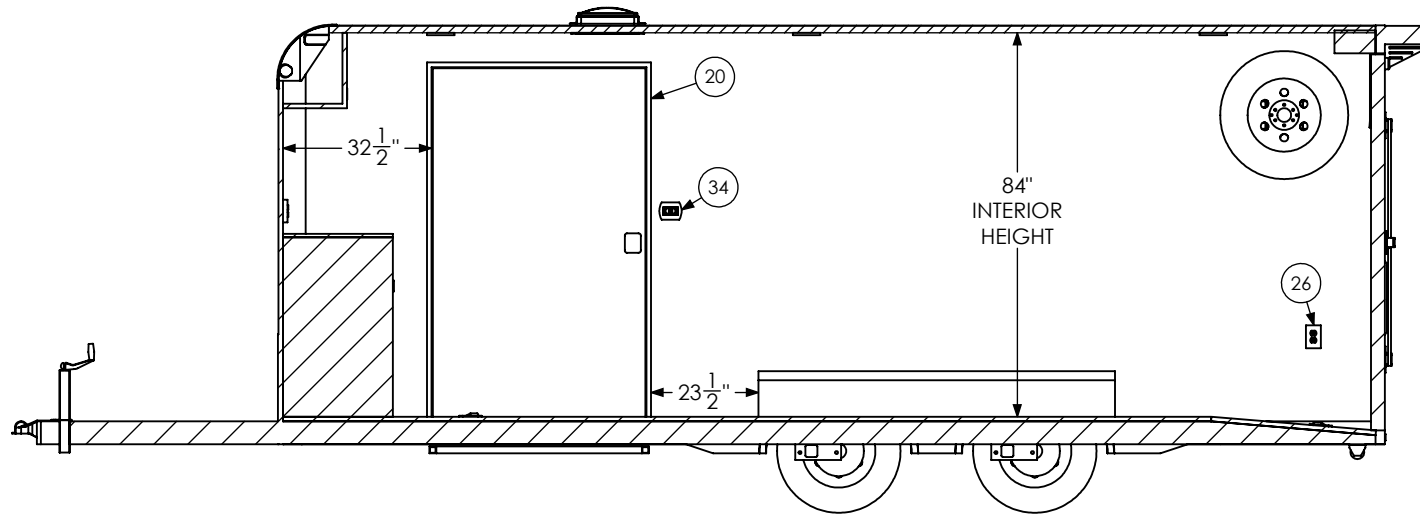


PROPRIETARY AND CONFIDENTIAL

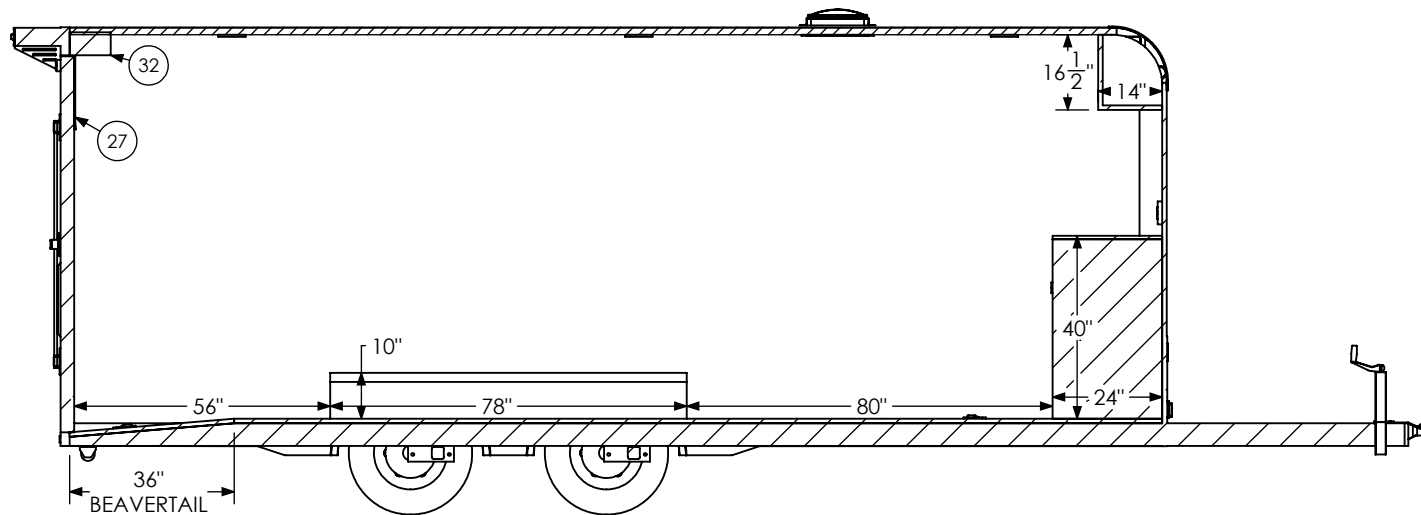
THE INFORMATION CONTAINED IN THIS DRAWING IS THE SOLE PROPERTY OF INTECH TRAILERS. ANY REPRODUCTION IN PART OR AS A WHOLE WITHOUT THE WRITTEN PERMISSION OF INTECH TRAILERS IS PROHIBITED.

SCALE: 1:36	NAME	DATE	<i>inTech Trailers</i>	
DRAWN	NjM	1/3/22	inTech BTL8.5x20TA2 - STANDARD FLOORPLAN	
ALL DIMENSIONS ARE IN INCHES AND ARE NOMINAL. DIMENSIONS ON ACTUAL TRAILER MAY VARY FROM WHAT IS SHOWN ON PRINT BASED ON ACTUAL FRAMING AND TRAILER STRUCTURE. UNLESS NOTED AS CRITICAL			DWG. NO. BTL8.5x20TA2 Trailer Assembly - Standard	REV. H

SHEET 2 OF 5



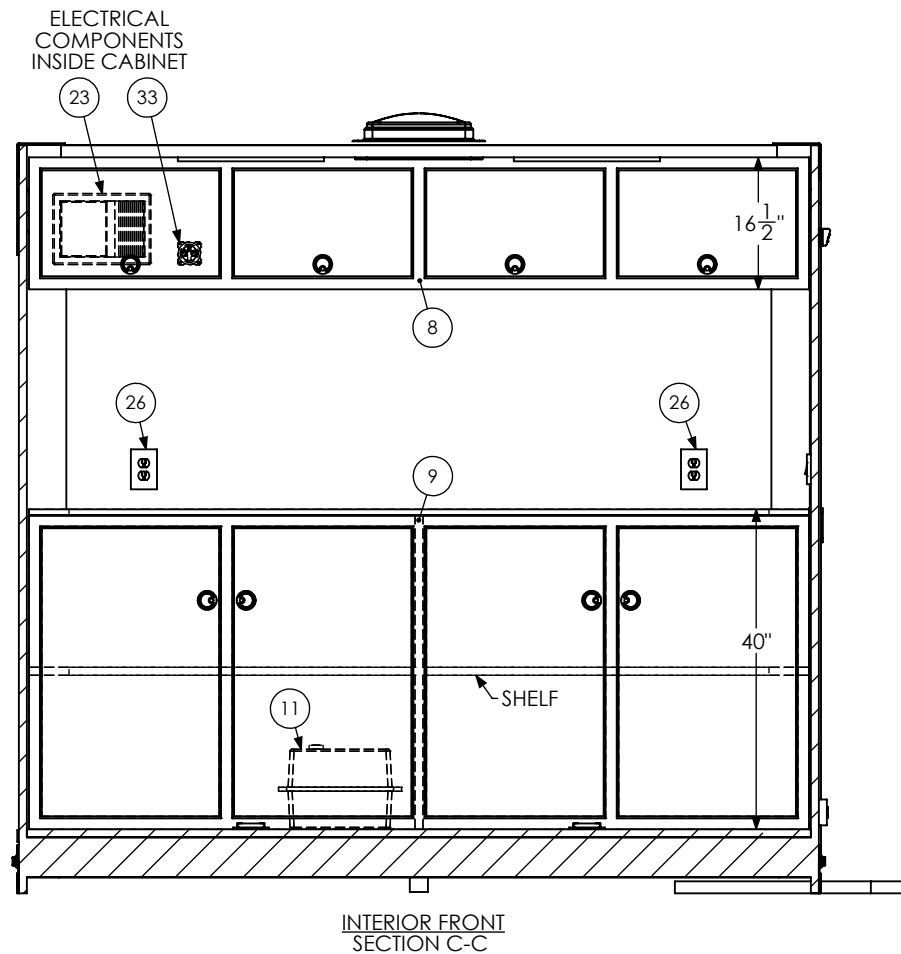
INTERIOR CURB SIDE
SECTION A-A



INTERIOR ROAD SIDE
SECTION B-B

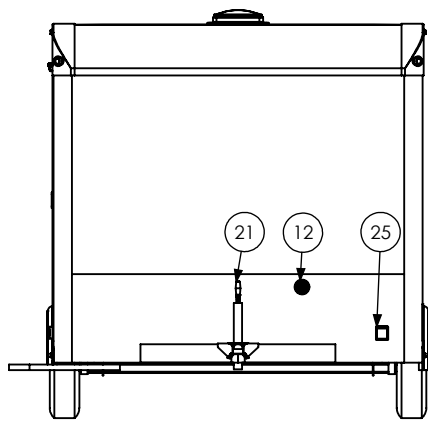
SCALE: 1:42	NAME	DATE	<i>inTech Trailers</i>	
DRAWN	NjM	1/3/22	inTech BTL8.5x20TA2 - STANDARD INTERIOR SIDES	
ALL DIMENSIONS ARE IN INCHES AND ARE NOMINAL. DIMENSIONS ON ACTUAL TRAILER MAY VARY FROM WHAT IS SHOWN ON PRINT BASED ON ACTUAL FRAMING AND TRAILER STRUCTURE. UNLESS NOTED AS CRITICAL			DWG. NO. BTL8.5x20TA2 Trailer Assembly - Standard	REV. H

PROPRIETARY AND CONFIDENTIAL
 THE INFORMATION CONTAINED IN THIS DRAWING IS THE
 SOLE PROPERTY OF INTECH TRAILERS. ANY REPRODUCTION
 IN PART OR AS A WHOLE WITHOUT THE WRITTEN PERMISSION
 OF INTECH TRAILERS IS PROHIBITED.

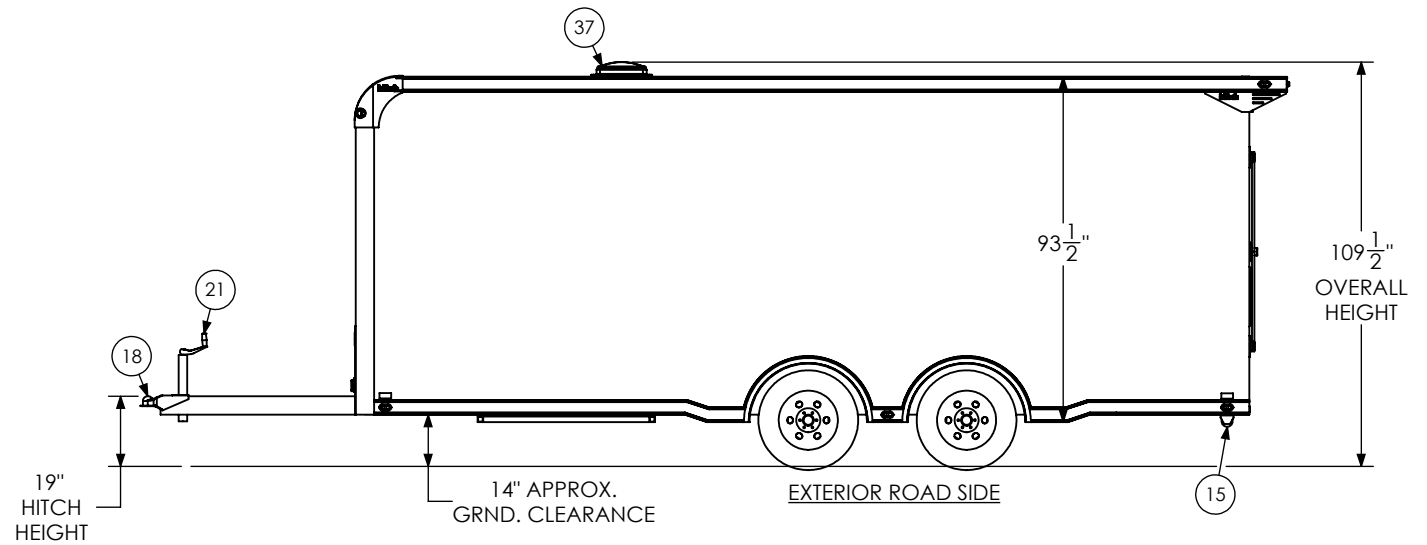


PROPRIETARY AND CONFIDENTIAL
 THE INFORMATION CONTAINED IN THIS DRAWING IS THE
 SOLE PROPERTY OF INTECH TRAILERS. ANY REPRODUCTION
 IN PART OR AS A WHOLE WITHOUT THE WRITTEN PERMISSION
 OF INTECH TRAILERS IS PROHIBITED.

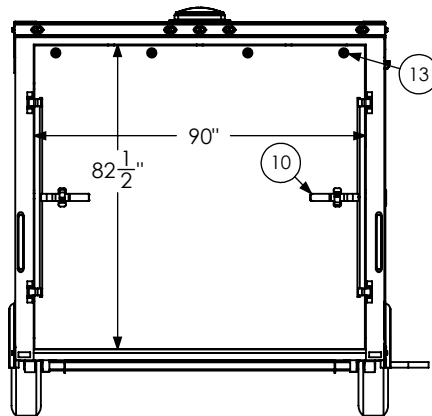
SCALE: 1:24	NAME	DATE	<i>inTech Trailers</i>	
DRAWN	NjM	1/3/22	inTech BTL8.5x20TA2 - STANDARD INTERIOR FRONT	
ALL DIMENSIONS ARE IN INCHES AND ARE NOMINAL. DIMENSIONS ON ACTUAL TRAILER MAY VARY FROM WHAT IS SHOWN ON PRINT BASED ON ACTUAL FRAMING AND TRAILER STRUCTURE. UNLESS NOTED AS CRITICAL		DWG. NO.	SHEET 4 OF 5	REV.
		BTL8.5x20TA2 Trailer Assembly - Standard		H



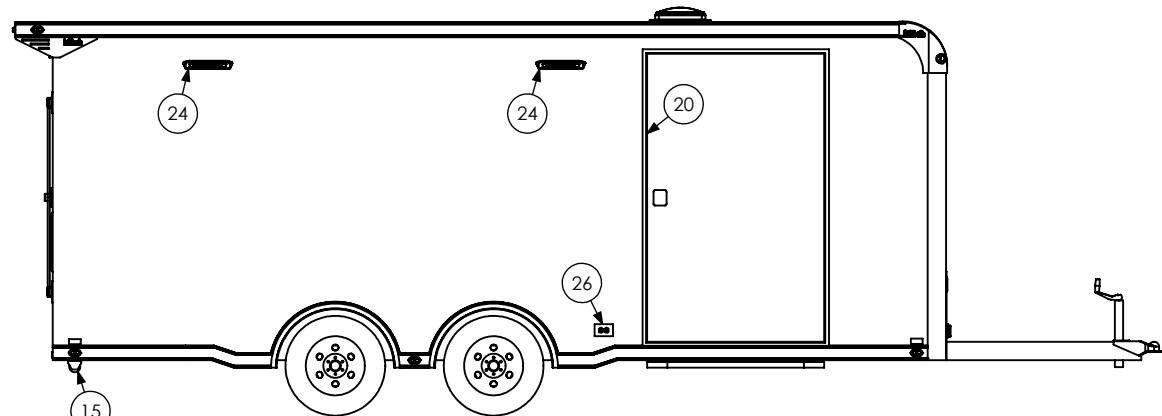
EXTERIOR FRONT



EXTERIOR ROAD SIDE



EXTERIOR REAR



EXTERIOR CURB SIDE

PROPRIETARY AND CONFIDENTIAL
 THE INFORMATION CONTAINED IN THIS DRAWING IS THE
 SOLE PROPERTY OF INTECH TRAILERS. ANY REPRODUCTION
 IN PART OR AS A WHOLE WITHOUT THE WRITTEN PERMISSION
 OF INTECH TRAILERS IS PROHIBITED.

SCALE: 1:52	NAME	DATE	<i>inTech Trailers</i>	
DRAWN	NjM	1/3/22	inTech BTL8.5x20TA2 - STANDARD EXTERIOR	
ALL DIMENSIONS ARE IN INCHES AND ARE NOMINAL. DIMENSIONS ON ACTUAL TRAILER MAY VARY FROM WHAT IS SHOWN ON PRINT BASED ON ACTUAL FRAMING AND TRAILER STRUCTURE. UNLESS NOTED AS CRITICAL		DWG. NO. BTL8.5x20TA2 Trailer Assembly - Standard	SHEET 5 OF 5	REV. H